



MacTranslator

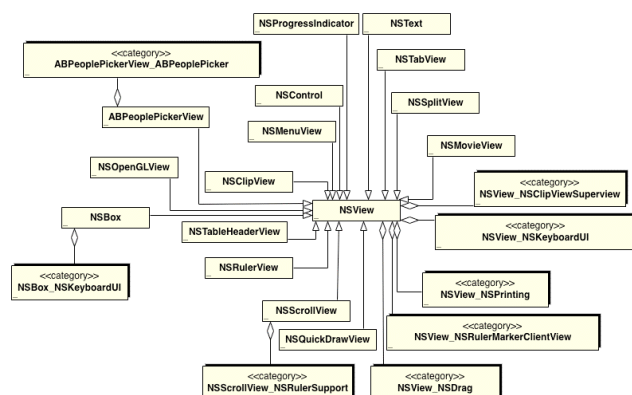
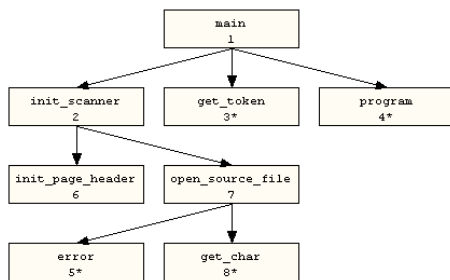


Generate Models from Code in Minutes



Generate accurate models of unfamiliar code in minutes. MacTranslator scans source code and outputs design information to a text file that can be imported into a modeling tool.

Use MacA&D Standard OSX to create class models from object-oriented code or data models from SQL. MacA&D Developer OSX adds structure charts for procedural code. Use QuickUML to create class models or QuickCRC to create CRC cards from object-oriented code.



Class Models

- Reengineer C++, Java, Delphi, PHP or Objective-C
- Partition Class Clusters into Diagrams

Data Models

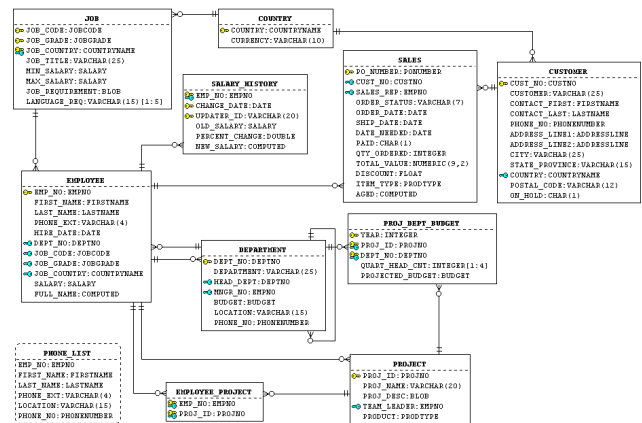
- Create Logical and Physical Data Models from SQL
- Process SQL for Oracle, SQL Server, DB2, Sybase, Informix and InterBase

Structure Charts

- Document C, Pascal, Basic, PHP or Fortran
- Level Large Programs into Multiple Diagrams
- Handle Multiple Threads of Execution

CRC Cards

- Make CRC Cards for C++, Java, Delphi or Objective-C



Excel Software

515 N Racetrack Rd
Henderson, NV 89015 USA
Ph. 702-445-7645
Fax 702-445-7814



www.excelsoftware.com